

Web Bonus: Graphic Red Bed Size

Adapted from a Quilt Designed by
MELLIE WATTS

Skill Level
CONFIDENT BEGINNER

Finished Quilt Size
80½" x 80½"

Number of Blocks and Finished Size
25 Pinwheel Variation Blocks
16" x 16"

Fabric Requirements

White solid (blocks)	4¼ yds.
Red solid (blocks, binding)	47½ yds.
Backing	77½ yds.
Batting size	90" x 90"

Planning

Mellie's graphic quilt design is perfect for holiday decorating as well as for display throughout the year.

Cutting Instructions

White solid

150 squares 47/8" x 47/8"
200 squares 27/8" x 27/8"

Red solid

9 strips 2½" x width of fabric (binding)
150 squares 47/8" x 47/8"
200 squares 27/8" x 27/8"

Piecing the Blocks

1 Draw diagonal line on wrong side of white 47/8" square. Place marked square on red 47/8" square, right sides together (**Diagram I-A**). Sew ¼" seam on each side of marked line; cut apart on marked line. Open and press to make 2 large pieced squares, which should measure 4½" square from raw edge to raw edge. Make 300. In same manner, use white and red 27/8" squares to make 400 small pieced squares (**Diagram I-B**), which should measure 2½" square from raw edge to raw edge.

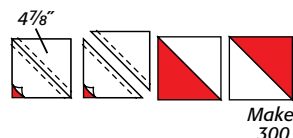


Diagram I-A



Diagram I-B



The 48½" square version of Mellie's design is patterned in the November/December 2013 issue of McCall's Quilting.

2 Sew together 4 small pieced squares, watching orientation, to make center square (**Diagram II**). Make 100.

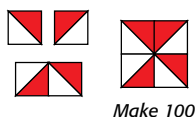


Diagram II

3 Sew together 3 large pieced squares and 1 center square to make quarter-block (**Diagram III**). Make 100.

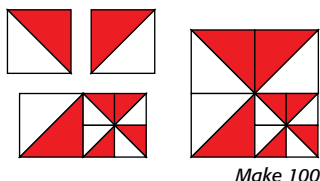
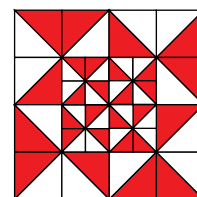
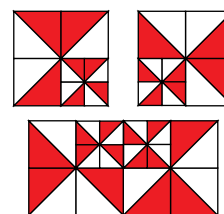


Diagram III

4 Stitch together 4 quarter-blocks, rotating as shown, to make Pinwheel Variation Block (**Diagram IV**). Make 25.



Make 25

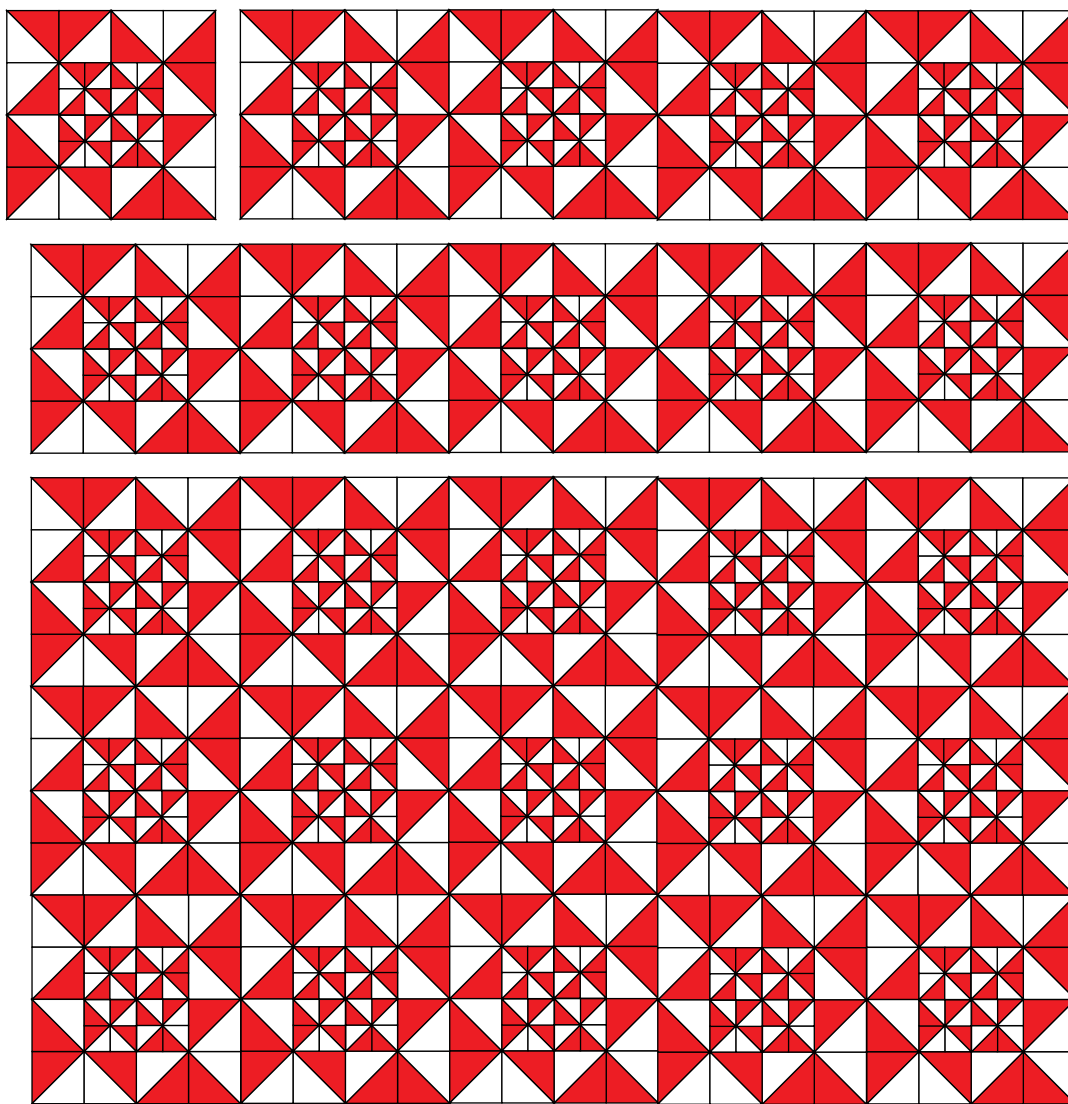
Diagram IV

Assembling the Quilt Top

5 Referring to the **Assembly Diagram**, sew 5 rows of 5 blocks each. Sew rows together.

Quilting and Finishing

6 Layer, baste, and quilt. Bind with red solid.



Assembly Diagram